

HTA ATLAS SERIES



HIGH AMBIENT TEMPERATURE AND HIGH
ALTITUDE VERTICAL HOLLOW SHAFT SERIES

HTA ATLAS SERIES

In pumping applications that require a 300HP and above we realize the motor should be built with a larger and more robust frame with features that allow the motor to have superior cooling and pumping power. BMR USA has designed our 300HP-1000HP motors in a large 5800 series frame called the HTA ATLAS SERIES. The HTA ATLAS SERIES has unmatched features to ensure long lasting performance in rigorous applications.

HORSEPOWER RANGES: 300HP-1000HP

SPEEDS: 1800, 1200, 900, 720, 600, 514

DESIGN VOLTAGES: THREE PHASE 460, 2300, 4160 AT 60HZ

ENCLOSURES: WPI, TEFC

EFFICIENCY LEVELS: HIGH AND PREMIUM

SHAFT TYPES: HOLLOW AND SOLID

PREMIUM PRODUCT FEATURES AS STANDARD

INSULATED THRUST BEARING CARRIER

Insulates electric current to prevent fluting in thrust bearings

DOUBLE STACK ANGULAR CONTACT BEARINGS

BMR USA double stacks large 7236B 40 degree angular contact bearings to allow the motor to run on a 175% EHT applications

VENTILATED ROTOR AND STATOR DESIGN

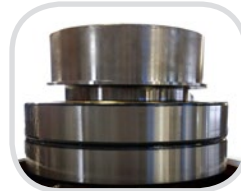
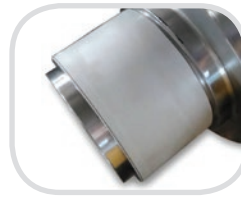
In larger frame motors higher heat will be generated, this requires larger air generation and more cooling surface. BMR has designed our larger framed motors to have AIR DUCTED ROTOR AND STATORS to draw air into the hollow rotor core that is air ducted to increase surface space

LOWER GUIDE BEARING PROTECTION RINGS

Lower brush grounding rings are installed to conduct shaft currents to the motors ground and doesn't allow the electrical current from entering the lower bearing causing premature bearing failure

OIL BATH P BASE DESIGN FOR LOWER GUIDE BEARING

Having a lower oil bath lubrication design for the guide bearing allows for lower maintenance, increases bearing life, and helps to minimize foreign material from harming the bearing



OTHER PREMIUM FEATURES AS STANDARD

- All Class H insulation including copper windings, varnish, slot sticks, lead wires
- Bearing and Winding RTD's
- 120v Space Heaters
- 50 Degree Ambient Rated
- Durable light weight FRP top cover
- Deep set oil bath lubrication system
- Dual Chrome lifting lugs
- U.L Approved Insulation System
- Double VPI Treatment with non hydroscopic epoxy varnish
- All Stainless Steel nameplate with full data
- Twist Spigot Oil Drain
- Oversized one piece sight glass
- Handle Grip Oil fill plug
- 12 Ball Type Non Reverse Ratchet made from Ductile iron
- All Stainless Steel non corrosive rodent screens